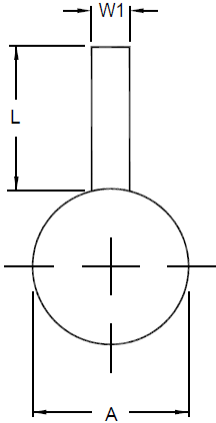
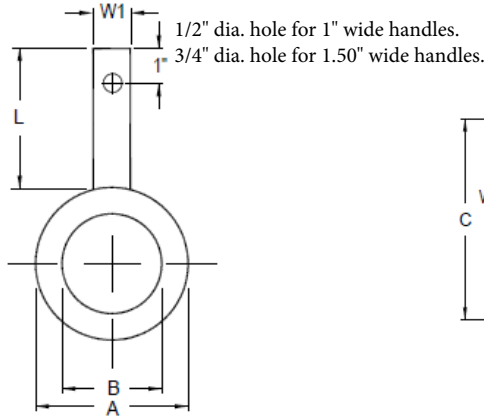


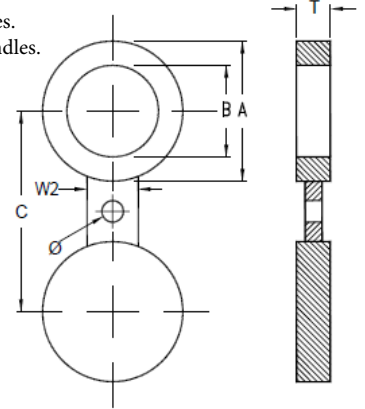
ASME B16.48 ANSI 900# RAISED FACE/FLAT FACE



11-PB
PADDLE BLIND



12-PS
PADDLE SPACER



13-SB
FIGURE 8 BLANK

DIMENSIONAL DATA (INCHES)

APPROXIMATE WEIGHTS (LBS)

SIZE	A	B	C	T	L	W1	W2	Ø	11-PB	12-PS	13-SB
1/2	2.38	0.62	3.25	0.25	5.00	1.00	1.50	0.875	1	1	1
3/4	2.62	0.82	3.50	0.25	5.00	1.00	1.62	0.875	1	1	1
1	3.00	1.05	4.00	0.25	5.00	1.00	2.25	1.00	1	1	2
1 1/4	3.38	1.44	4.38	0.38	5.00	1.00	2.25	1.00	2	2	2
1 1/2	3.75	1.68	4.88	0.38	5.00	1.00	2.62	1.125	2	2	3
2	5.50	2.16	6.50	0.50	5.00	1.00	2.25	1.00	5	4	7
2 1/2	6.38	2.64	7.50	0.50	5.00	1.00	2.62	1.125	6	5	9
3	6.50	3.26	7.50	0.62	5.00	1.00	2.62	1.00	7	6	11
4	8.00	4.26	9.25	0.75	5.00	1.00	3.00	1.25	12	9	20
5	9.62	5.30	11.00	0.88	5.00	1.00	3.38	1.375	20	14	32
6	11.25	6.36	12.50	1.00	5.00	1.00	3.38	1.25	30	21	49
8	14.00	8.33	15.50	1.38	5.00	1.00	3.75	1.50	62	41	101
10	17.00	10.42	18.50	1.62	5.00	1.50	4.12	1.50	109	69	173
12	19.50	12.39	21.00	1.88	5.00	1.50	4.12	1.50	163	99	257
14	20.38	13.62	22.00	2.12	6.00	1.50	4.50	1.625	202	115	310
16	22.50	15.62	24.25	2.38	6.00	1.50	4.88	1.75	274	145	413
18	25.00	17.62	27.00	2.62	6.00	1.50	5.25	2.00	373	191	558
20	27.38	19.56	29.50	2.88	6.00	1.50	5.25	2.125	488	243	724
24	32.88	23.50	35.50	3.50	6.00	1.50	6.00	2.625	852	421	1271

- Standard Materials are: A.S.T.M. A516 GR 70, 304 Stainless Steel & 316 Stainless Steel. Other alloys can be furnished upon request.
- Standard Finishes are: Smooth mill: Some scale may be apparent, Serrated: 125 - 250 AARH (3.2 - 6.3 Ra)
- Depending on customer specification, some dimensions can be different from what on this page is defined.
- Weights are for carbon steel components.