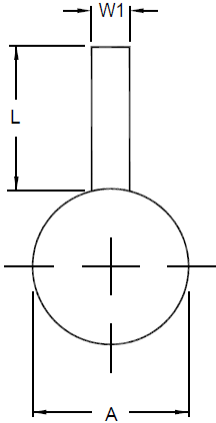
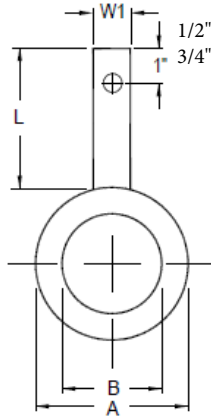


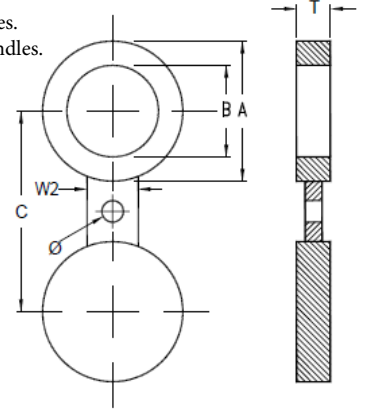
ASME B16.48 ANSI 600# RAISED FACE/FLAT FACE



11-PB
PADDLE BLIND



12-PS
PADDLE SPACER



13-SB
FIGURE 8 BLANK

DIMENSIONAL DATA (INCHES)

APPROXIMATE WEIGHTS (LBS)

SIZE	A	B	C	T	L	W1	W2	Ø	11-PB	12-PS	13-SB
1/2	2.00	0.62	2.62	0.25	4.00	1.00	1.50	0.625	1	1	1
3/4	2.50	0.82	3.25	0.25	4.00	1.00	1.50	0.75	1	1	1
1	2.75	1.05	3.50	0.25	4.00	1.00	2.25	0.75	1	1	1
1 1/4	3.12	1.44	3.88	0.38	4.00	1.00	2.25	0.75	2	2	2
1 1/2	3.62	1.68	4.50	0.38	4.00	1.00	2.62	0.875	2	2	3
2	4.25	2.16	5.00	0.38	4.00	1.00	2.25	0.75	2	2	3
2 1/2	5.00	2.64	5.88	0.50	4.00	1.00	2.62	0.875	4	3	6
3	5.75	3.26	6.62	0.50	4.00	1.00	2.62	0.875	5	4	7
3 1/2	6.25	3.76	7.25	0.62	4.00	1.00	3.00	1.00	7	5	10
4	7.50	4.26	8.50	0.62	4.00	1.00	3.00	1.00	9	6	14
5	9.38	5.30	10.50	0.75	4.00	1.00	3.38	1.125	16	11	26
6	10.38	6.36	11.50	0.88	5.00	1.00	3.38	1.125	23	15	36
8	12.50	8.33	13.75	1.12	5.00	1.00	3.75	1.25	41	24	63
10	15.62	10.42	17.00	1.38	5.00	1.50	4.12	1.375	78	45	119
12	17.88	12.39	19.25	1.62	5.00	1.50	4.12	1.375	119	64	178
14	19.25	13.62	20.75	1.75	5.00	1.50	4.50	1.50	149	76	220
16	22.12	15.62	23.75	2.00	6.00	1.50	4.88	1.625	224	115	332
18	24.00	17.62	25.75	2.12	6.00	1.50	5.25	1.75	278	131	403
20	26.75	19.56	28.50	2.50	6.00	1.50	5.25	1.75	405	192	591
24	31.00	23.50	33.00	2.88	6.00	1.50	6.00	2.00	623	270	887

- Standard Materials are: A.S.T.M. A516 GR 70, 304 Stainless Steel & 316 Stainless Steel. Other alloys can be furnished upon request.
- Standard Finishes are: Smooth mill: Some scale may be apparent, Serrated: 125 - 250 AARH (3.2 - 6.3 Ra)
- Depending on customer specification, some dimensions can be different from what on this page is defined.
- Weights are for carbon steel components.