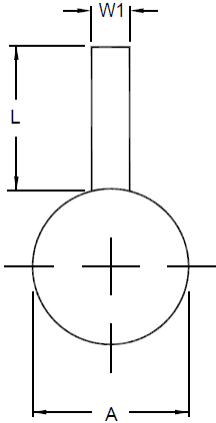
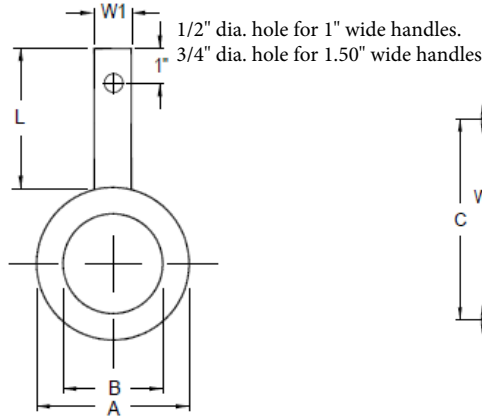


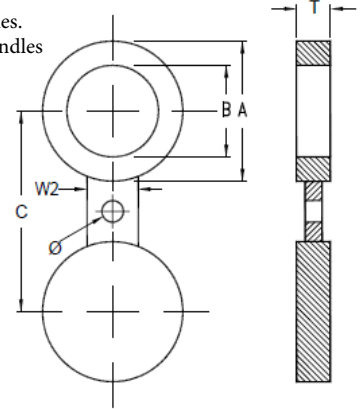
ASME B16.48 ANSI 300# RAISED FACE/FLAT FACE



11-PB
PADDLE BLIND



12-PS
PADDLE SPACER



13-SB
FIGURE 8 BLANK

DIMENSIONAL DATA (INCHES)

APPROXIMATE WEIGHTS (LBS)

SIZE	A	B	C	T	L	W1	W2	Ø	11-PB	12-PS	13-SB
1/2	2.00	0.62	2.62	0.25	4.00	1.00	1.50	0.625	1	1	1
3/4	2.50	0.82	3.25	0.25	4.00	1.00	1.50	0.75	1	1	1
1	2.75	1.05	3.50	0.25	4.00	1.00	1.50	0.75	1	1	1
1 1/4	3.12	1.66	3.88	0.25	4.00	1.00	1.50	0.75	1	1	2
1 1/2	3.62	1.90	4.50	0.25	4.00	1.00	2.00	0.875	2	1	2
2	4.25	2.38	5.00	0.38	4.00	1.00	2.00	0.75	2	2	3
2 1/2	5.00	2.88	5.88	0.38	4.00	1.00	2.50	0.875	3	2	4
3	5.75	3.50	6.62	0.38	4.00	1.00	2.50	0.875	4	3	5
3 1/2	6.38	4.00	7.25	0.50	4.00	1.00	2.50	0.875	6	4	8
4	7.00	4.50	7.88	0.50	4.00	1.00	2.50	0.875	7	4	9
5	8.38	5.56	9.25	0.62	4.00	1.00	3.00	0.875	11	7	16
6	9.75	6.62	10.62	0.62	4.00	1.00	3.00	0.875	14	8	21
8	12.00	8.62	13.00	0.88	4.00	1.00	3.50	1.00	30	15	43
10	14.12	10.75	15.25	1.00	5.00	1.00	4.00	1.125	46	21	65
12	16.50	12.75	17.75	1.12	5.00	1.50	4.00	1.25	71	30	98
14	19.00	14.00	20.25	1.25	5.00	1.50	4.75	1.25	104	49	149
16	21.12	16.00	22.50	1.50	5.00	1.50	4.88	1.375	153	67	216
18	23.38	18.00	24.75	1.62	5.00	1.50	4.50	1.375	202	84	282
20	25.62	20.00	27.00	1.75	6.00	1.50	4.75	1.375	261	105	360
24	30.38	24.00	32.00	2.00	6.00	1.50	5.50	1.625	417	160	571

- Standard Materials are: A.S.T.M. A516 GR 70, 304 Stainless Steel & 316 Stainless Steel. Other alloys can be furnished upon request.
- Standard Finishes are: Smooth mill: Some scale may be apparent, Serrated: 125 - 250 AARH (3.2 - 6.3 Ra)
- Depending on customer specification, some dimensions can be different from what on this page is defined.
- Weights are for carbon steel components.