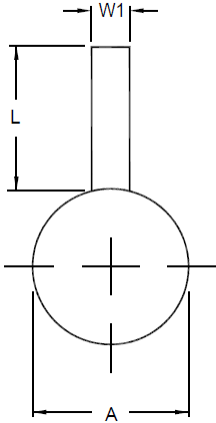
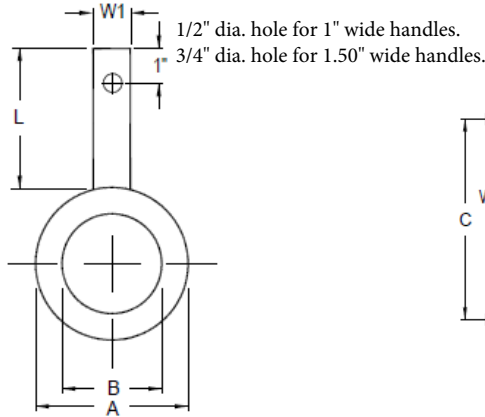


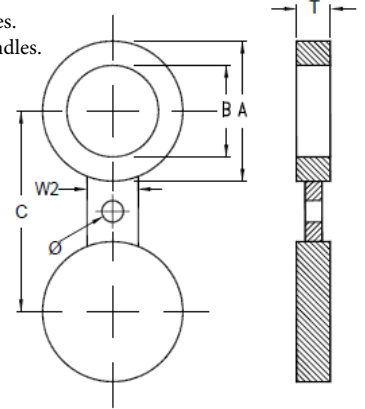
ASME B16.48 ANSI 2500# RAISED FACE/FLAT FACE



11-PB
PADDLE BLIND



12-PS
PADDLE SPACER



13-SB
FIGURE 8 BLANK

DIMENSIONAL DATA (INCHES)

APPROXIMATE WEIGHTS (LBS)

SIZE	A	B	C	T	L	W1	W2	Ø	11-PB	12-PS	13-SB
1/2	2.62	0.62	3.50	0.38	5.00	1.00	1.50	0.875	2	2	2
3/4	2.88	0.82	3.75	0.38	5.00	1.00	1.62	0.875	2	2	2
1	3.25	1.05	4.25	0.38	5.00	1.00	2.50	1.00	2	2	2
1 1/4	4.00	1.38	5.12	0.50	5.00	1.00	2.50	1.125	3	3	4
1 1/2	4.50	1.61	5.75	0.62	5.00	1.00	2.75	1.25	4	4	6
2	5.62	2.07	6.75	0.62	5.00	1.00	2.75	1.125	6	5	9
2 1/2	6.50	2.47	7.75	0.75	6.00	1.00	3.00	1.25	9	8	14
3	7.62	3.07	9.00	0.88	6.00	1.00	3.00	1.375	13	11	22
4	9.12	4.03	10.75	1.12	7.00	1.00	3.50	1.625	24	20	40
5	10.88	5.05	12.75	1.38	7.00	1.00	3.50	1.875	39	32	68
6	12.38	6.06	14.50	1.62	8.00	1.50	3.50	2.125	61	48	101
8	15.12	7.81	17.25	2.12	8.00	1.50	4.00	2.125	116	87	193
10	18.62	9.75	21.25	2.62	9.00	1.50	4.50	2.625	213	158	359
12	21.50	11.37	24.38	3.12	9.00	1.50	4.50	2.875	334	294	565

- Standard Materials are: A.S.T.M. A516 GR 70, 304 Stainless Steel & 316 Stainless Steel. Other alloys can be furnished upon request.
- Standard Finishes are: Smooth mill: Some scale may be apparent, Serrated: 125 - 250 AARH (3.2 - 6.3 Ra)
- Depending on customer specification, some dimensions can be different from what on this page is defined.
- Weights are for carbon steel components.