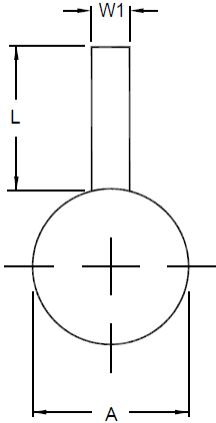
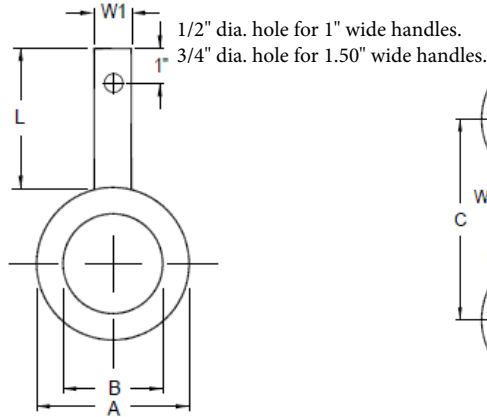


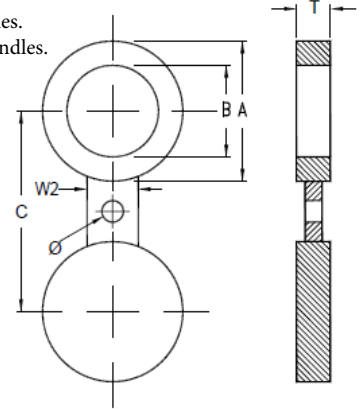
ASME B16.48 ANSI 150# RAISED FACE/FLAT FACE



11-PB
PADDLE BLIND



12-PS
PADDLE SPACER



13-SB
FIGURE 8 BLANK

DIMENSIONAL DATA (INCHES)

APPROXIMATE WEIGHTS (LBS)

SIZE	A	B	C	T	L	W1	W2	Ø	11-PB	12-PS	13-SB
1/2	1.75	0.62	2.38	*0.25	4.00	1.00	1.50	0.625	1	1	1
3/4	2.12	0.82	2.75	*0.25	4.00	1.00	1.50	0.625	1	1	1
1	2.50	1.05	3.12	*0.25	4.00	1.00	1.50	0.625	1	1	1
1 1/4	2.88	1.66	3.50	0.25	4.00	1.00	1.50	0.625	1	1	1
1 1/2	3.25	1.90	3.88	0.25	4.00	1.00	1.50	0.625	1	1	2
2	4.00	2.38	4.75	0.25	4.00	1.00	2.00	0.75	2	1	2
2 1/2	4.75	2.88	5.50	0.25	4.00	1.00	2.00	0.75	2	2	3
3	5.25	3.50	6.00	0.25	4.00	1.00	2.50	0.75	2	2	3
3 1/2	6.25	4.00	7.00	0.38	4.00	1.00	2.50	0.75	4	3	6
4	6.75	4.50	7.50	0.38	4.00	1.00	2.50	0.75	5	3	7
5	7.62	5.56	8.50	0.38	4.00	1.00	3.00	0.875	6	3	8
6	8.62	6.62	9.50	0.50	4.00	1.00	3.00	0.875	9	4	13
8	10.88	8.62	11.75	0.50	4.00	1.00	3.00	0.875	14	6	19
10	13.25	10.75	14.25	0.62	5.00	1.00	4.00	1.00	26	10	34
12	16.00	12.75	17.00	0.75	5.00	1.50	4.00	1.00	45	18	60
14	17.62	14.00	18.75	0.75	5.00	1.50	4.25	1.125	54	21	73
16	20.12	16.00	21.25	0.88	5.00	1.50	4.25	1.125	81	31	110
18	21.50	18.00	22.75	1.00	5.00	1.50	4.50	1.25	106	33	136
20	23.75	20.00	25.00	1.12	5.00	1.50	4.75	1.25	144	44	185
24	28.12	24.00	29.50	1.25	5.00	1.50	5.50	1.375	223	63	283

** THICKNESS EXCEEDS A.S.M.E. B16.48 REQUIREMENTS*

- Standard Materials are: A.S.T.M. A516 GR 70, 304 Stainless Steel & 316 Stainless Steel. Other alloys can be furnished upon request.
- Standard Finishes are: Smooth mill: Some scale may be apparent, Serrated: 125 - 250 AARH (3.2 - 6.3 Ra)
- Depending on customer specification, some dimensions can be different from what on this page is defined.
- Weights are for carbon steel components.