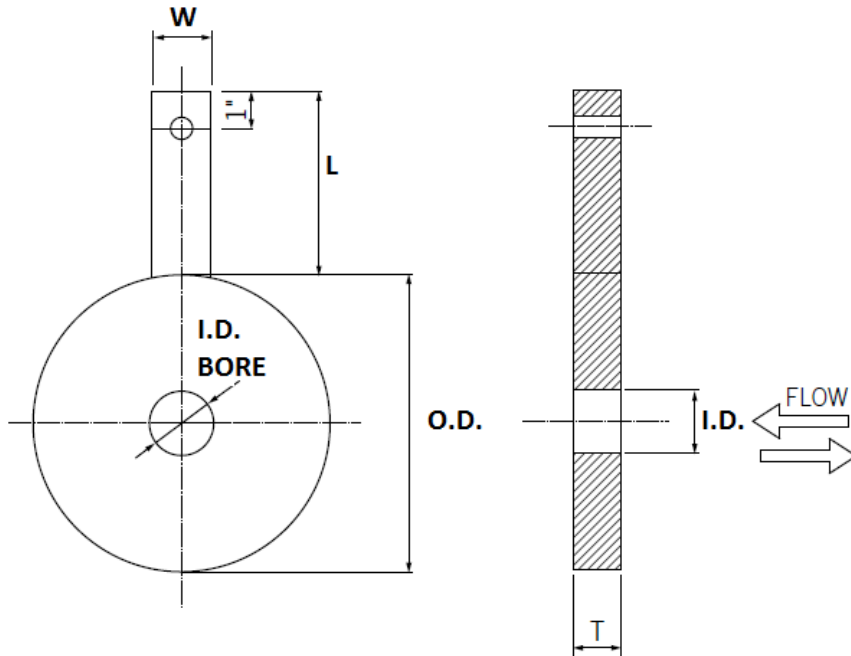


PADDLE TYPE ORIFICE PLATES

Unlike the standard concentric plate, the **Concentric Unbeveled Orifice** plate is used for bidirectional flow measurement. This design can also be employed to restrict and limit flow rates, and help minimize cavitation in control valves and other equipment.



Line Size	Handle Hole Diameter
1/2 thru 2	1/4
2-1/2 thru 12	3/8
14 thru 24	1/2
26 and larger	3/4

When ordering, please specify:

1. Line size and ANSI class
2. Plate O.D. if not as listed
3. Material grade
4. Plate thickness (Dimension T) if not as listed.
5. Diameter of bore

Concentric Unbeveled Orifice Plate Dimensions

LINE SIZE	150#	300#	600#	900#	1500#	2500#	ALL PRESSURE RATINGS								
	ANSI	ANSI	ANSI	ANSI	ANSI	ANSI	O.D.	O.D.	O.D.	T	L	W			
1/2							1.75	2.00	2.00	2.38	2.38	2.62	0.125	4	1
3/4							2.12	2.50	2.50	2.62	2.62	2.88	0.125	4	1
1							2.50	2.75	2.75	3.00	3.00	3.25	0.125	4	1
1 1/4							2.88	3.12	3.12	3.38	3.38	4.00	0.125	4	1
1 1/2							3.25	3.62	3.62	3.75	3.75	4.50	0.125	4	1
2							4.00	4.25	4.25	5.50	5.50	5.62	0.125	4	1
2 1/2							4.75	5.00	5.00	6.38	6.38	6.50	0.125	4	1
3							5.25	5.75	5.75	6.50	6.75	7.62	0.125	4	1
4							6.75	7.00	7.50	8.00	8.12	9.12	0.125	4	1
5							7.62	8.38	9.38	9.62	9.88	10.88	0.125	4	1
6							8.62	9.75	10.38	11.25	11.00	12.38	0.125	6	1.5
8							10.88	12.00	12.50	14.00	13.75	15.12	0.25	6	1.5
10							13.25	14.12	15.62	17.00	17.00	18.62	0.25	6	1.5
12							16.00	16.50	17.88	19.50	20.38	21.50	0.25	6	1.5
14							17.62	19.00	19.25	20.38	22.62	-	0.25	6	1.5
16							20.12	21.12	22.12	22.50	25.12	-	0.375	6	1.5
18							21.50	23.38	24.00	25.00	27.62	-	0.375	6	1.5
20							23.75	25.62	26.75	27.38	29.62	-	0.375	6	1.5
24							28.12	30.38	31.00	32.88	35.38	-	0.375	6	1.5

All dimension are in inches.

- All Orifice Plates are marked with line size, flange rating, bore size, and material grade. As an option, the customer's tag information can also be included
- After Boring, the Orifice Plate, a final finish is applied using a specially designed polishing machine that maintains the Orifice Plate flat