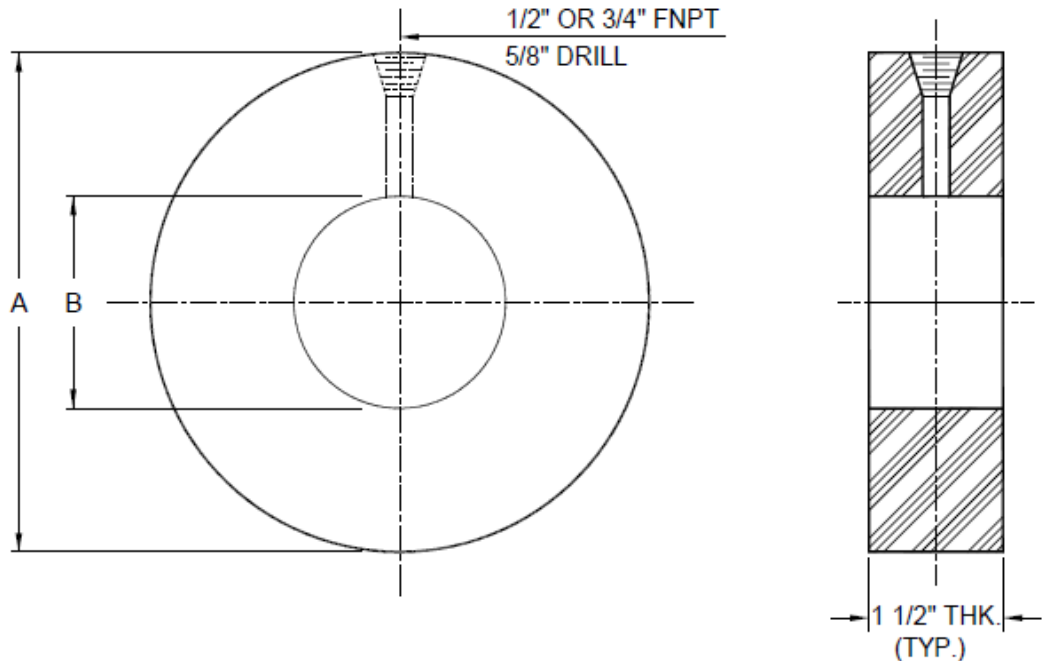


STANDARD RAISED FACE/FLAT FACE BLEED RINGS

(DRIP RINGS - TEST INSERTS)



"A" DIMENSION (INCHES)

APPROXIMATE WEIGHTS (LBS)

SIZE	B	150#	300#	600#	900#	1500#	150#	300#	600#	900#	1500#
1	1.32	2.50	2.75	2.75	3.00	3.00	2	2	2	2	2
1 1/2	1.90	3.25	3.625	3.625	3.75	3.75	2	3	3	4	4
2	2.375	4.00	4.25	4.25	5.50	5.50	4	4	4	8	8
2 1/2	2.875	4.75	5.00	5.00	6.375	6.375	5	6	6	11	11
3	3.50	5.25	5.75	5.75	6.50	6.75	5	7	7	10	11
4	4.50	6.75	7.00	7.50	8.00	8.125	9	10	12	15	15
6	6.625	8.625	9.75	10.375	11.25	11.00	10	17	21	28	26
8	8.625	10.875	12.00	12.50	14.00	13.75	15	23	27	41	38
10	10.75	13.25	14.125	15.625	17.00	17.00	20	28	43	58	58
12	12.75	16.00	16.50	17.75	19.375	20.25	31	37	51	71	83
14	14.00	17.625	19.00	19.125	20.25	22.50	38	55	57	72	104
16	16.00	20.125	21.125	22.00	22.375	25.00	50	64	77	82	123
18	18.00	21.50	23.375	23.875	24.875	27.50	46	74	82	99	144
20	20.00	23.75	25.625	26.625	27.25	29.50	55	86	103	115	157
24	24.00	28.125	30.375	30.875	32.75	35.25	72	116	126	166	223

- Standard Materials are: A.S.T.M. A516 GR 70, 304 Stainless Steel & 316 Stainless Steel. Other alloys can be furnished upon request.
- Standard Finishes are: Smooth mill: Some scale may be apparent, Serrated: 125 - 250 AARH (3.2 - 6.3 Ra)
- Depending on customer specification, some dimensions can be different from what on this page is defined.
- Weights are for carbon steel components.